

Raman Probes TO-RP-XXX-Almad

Description of the Product

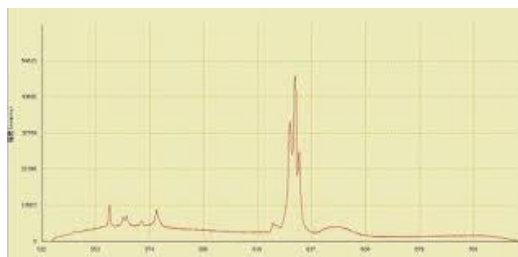


The TO-RP-XXX-XXX fiber optic probe series are designed for routine laboratory Raman spectroscopy and mostly for pedagogy.

The probe is lightweight and compact; it connects to USB spectrometer by an SMA905 connector and to the excitation laser with a second one.

Its range goes from 150cm⁻¹ to more than 4000cm⁻¹. It has a stainless steel head with a good working distance of 7.5mm. Our probe has the best clear Cost/Performance winner among laboratory and pedagogy Raman probes.

Our probes are available for two excitation wavelengths: 532 and 785nm. For other excitation wavelength, please contact us. For custom configurations and special applications, please contact us



Specifications

Wavelength	532	785
Dimension (mm)	111x38x14.8	
Probe Tip (mm)	38	
Raman Shift (cm ⁻¹)	150-4500	
Coupling System	SMA905	
Working Distance (mm)	7.5	
Optical Fibers	Excitation : 100µm Collection : 200µm Length : 1m N.A = 0.22	
Operating Temperature °C	0-40	

For your command **TO-RP-XXX-Almad**, please specify:
XXX : Wavelength of the excitation laser , **532** or **785**